

YORNANING BIKE TRACKS

The Yorny is part of the Kooloot ('go somewhere') Biddi mountain bike trail and associated trails.

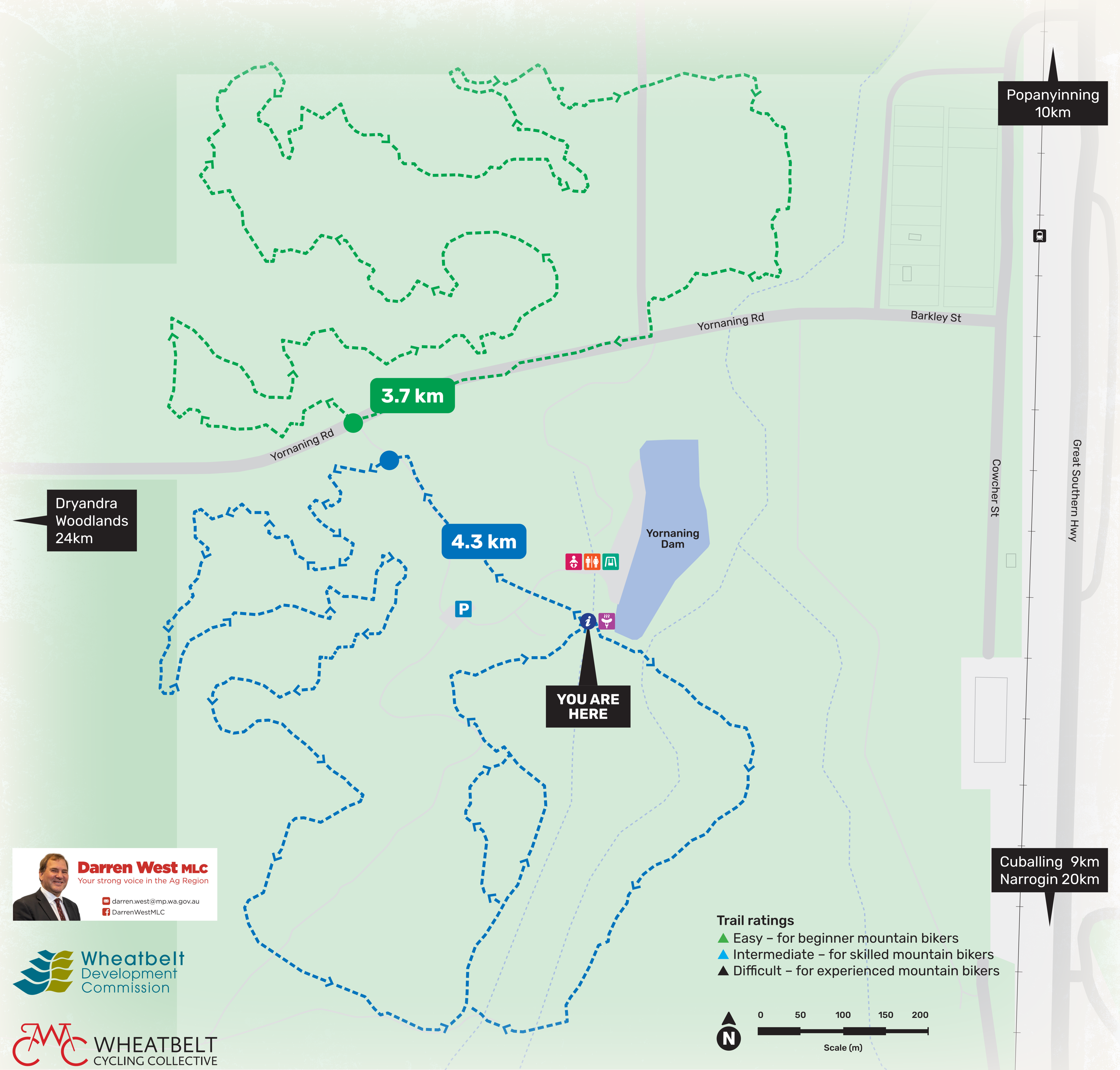
Yornaning Dam carpark is the primary access point for mountain bike tracks within the Yornaning Dam parklands. A bush explorers purpose-built single direction track has been designed to encourage local riders to improve their skills and cycling fitness.

Initiated by the Shire of Cuballing, the track was then developed further by the Chin family and Wheatbelt Cycling Collective. The present-day trail was completed in 2021 and now includes over 14km of green-rated tracks with variable degrees of difficulty.

- One-way, marked with red reflectors on white direction markers
- Narrow, with technical hairpin turns and several skill challenges
- Incorporates or gives access to shorter loops (blue diamond rated)

See the Trailforks app for further details, track profile and trail mapping.

North loop green 3.7km Single direction
Climb: 62m Descent: -66m 30 minutes approx
A slow track over loose quarry gravel, bush, forest, tight technical, includes some elevation, seasonal rare wildflowers, a typical explorer's track.
Southern loop blue 4.3km Single direction
Climb: 93m Descent: -94m 30 minutes approx
Best described as a minimalistic style mountain bike rider track, features BMX, loose sand to granula, rough soil cobble sections, open plains, bush, rough terrain, to regenerating forest, includes 6 log roll-overs, and one skill balancing challenge.



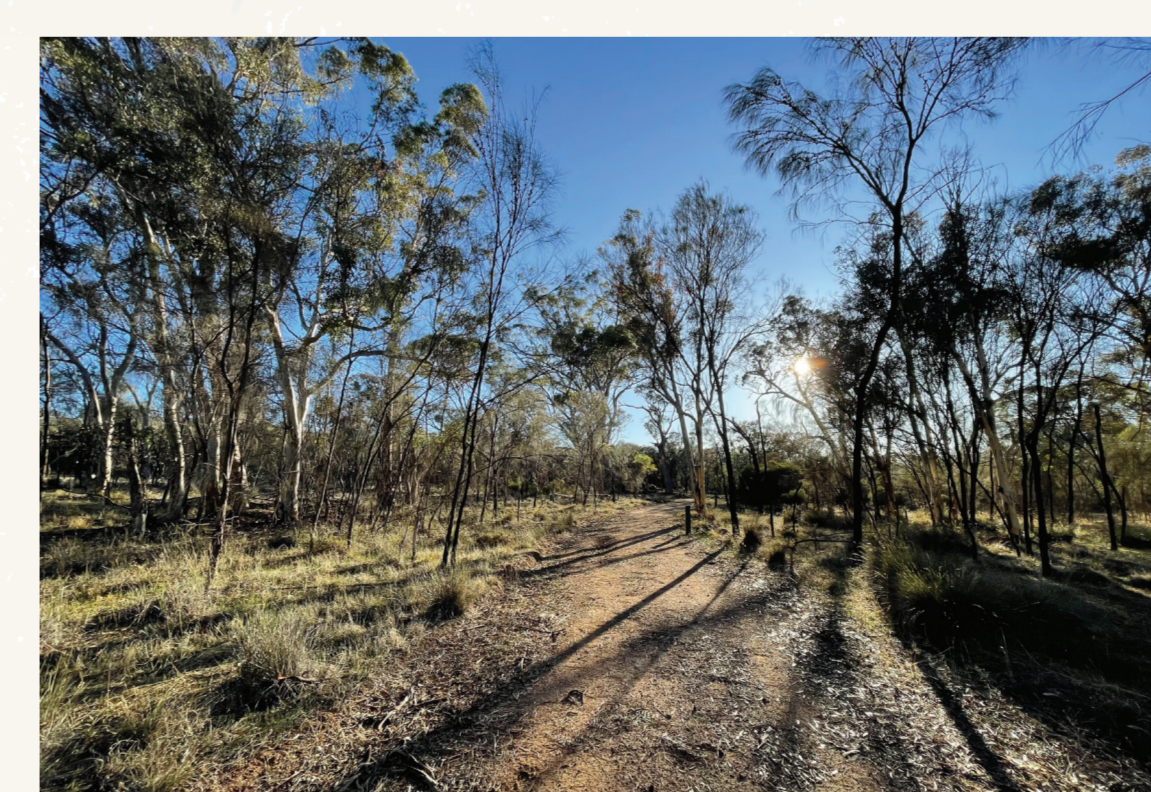
Ride responsibly

- 1 Follow directional markers and keep to the sanctioned trail.
- 2 Minimise track damage – don't skid!
- 3 Be courteous and respectful of other trail users.
- 4 Carry food, water, first aid and bike tools.
- 5 Leave no trace; remove animal waste.
- 6 Call the Shire of Cuballing 08 9883 6031 to report areas requiring maintenance.
- 7 Volunteer! Call the Shire to find out how you can help.
- 8 Download the Emergency+ app.
- 9 Phone 000 to report fires.

MANY HANDS MAKE LIGHT WORK

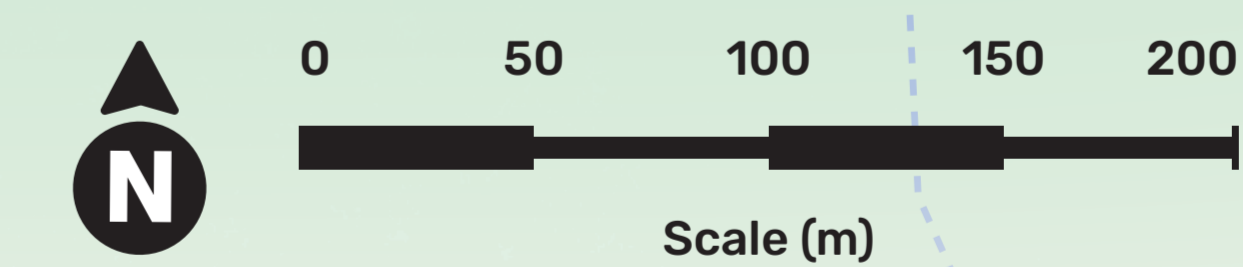
Most of the recent trail construction work was done by volunteers from the Wheatbelt Cycling Collective. Maintenance is undertaken by volunteers with the Shire of Cuballing.

The support of the Shire is gratefully acknowledged, as are contributions from the Chin family and the local community.



Trail ratings

- ▲ Easy – for beginner mountain bikers
- ▲ Intermediate – for skilled mountain bikers
- ▲ Difficult – for experienced mountain bikers



Key

- Sealed roads
- Great Southern Railway
- North Loop Green bike trail
- Southern Loop Blue bike trail
- Information bay
- Public parking
- Public toilets
- Playground
- BBQ & picnic facilities

- Great Southern Hwy:
- ↑ Popanyinning 10km
 - ↓ Cuballing 9km
 - ↓ Narrogin 20km
- Yornaning Rd West:
- ← Dryandra Woodlands 24km

