

The Cuby News

Publication by the Shire of Cuballing
PO Box 13 Cuballing WA 6311

Monthly publication for Cuballing, Yornaning and Popanyinning

June 2019

This year the markets were hosted by the Popanyinning Progress Association. The main street of Popanyinning set the perfect atmosphere to house the market stalls on Sunday 5th May and the weather did not disappoint. The sun shone throughout the morning and the buyers came out in droves.



There was a variety of market stalls this year, fresh bread, plants, nic nacs, jams, preserves, vegetables, rustic sculptures, wind chimes, handmade shopping bags, essential oils, vinyl decals, kitchen supplies, just to name a few. And we can't forget the sausage sizzle.



For the first time the Popanyinning railway building was open to the public, this was very much a hit with locals and people interested in history. Majority of the items in the railway building have been kindly donated.

Most importantly the Popanyinning Progress Association raised some much needed funds to start and continue projects around the Popanyinning town. Be sure to keep your eyes peeled.



REDEVELOPMENT — MEMORIAL PARK CUBALLING



Office Opening Hours:
Monday—Thursday,
8.30am—4.30pm
Friday,
8.30am—4.00pm

PO Box 13
Cuballing WA 6311
Ph: 08 9883 6031
enquiries@cuballing.wa.gov.au
www.cuballing.wa.gov.au

REDEVELOPMENT — MEMORIAL PARK CUBALLING

The Shire of Cuballing intend to commence an upgrade of the Cuballing War Memorial Park later in 2019 and would welcome your comments on the proposed works.

The Shire has prepared photoshopped images on the opposite page to indicate how the upgraded Memorial Park may look. The project involves:

1. Connecting electricity to the site.
Electricity at the memorial would improve the ability to run services at the Memorial and allow efficient irrigation of the gardens and lawn. This could also provide future lighting at the memorial.
2. Installing bollards.
The Memorial Park is currently defined by plants and pine pole barriers. The pine logs are deteriorating and will become a hazard. Hardy recycled plastic bollards would define the memorial area and will improve access.
3. Removing trip hazards and reticulating lawn area.
The lawn at the memorial is currently at two levels, retained by low concrete kerbing. Removing the kerbing, building the lawn up to the level of brick paving will remove trip hazards and improve access. The area immediately south of the Memorial is to be planted to lawn to connect the area to the adjacent car park and seating area.
4. Installing automatic lawn reticulation.
Reticulation of the gardens and lawn will reduce ongoing gardening costs to Council while improving the ability to maintain the area in the best condition.
5. Expand the paving around the memorial monuments.
The existing paving around the memorial

would be expanded to be larger in area to provide a larger area for services and to remove the rosemary growing beside the memorial foundation. The connection between the pavers and lawn would not involve a change in height.

6. Replace the flag pole.
The existing flag pole has been recently refurbished in 2015 by the Cuballing Men's Shed and is already showing signs of rust.
7. Install seating.
At least two recycled park benches are planned for the eastern side of the memorial park, under trees. The benches would be the same colour as the bollards on the west side of the memorial.
8. Art work.
An artwork on the west side of the memorial is planned but not yet finalised. A relatively flat work, that fits in line with park benches and slightly in front of nearby trees, would define the boundary of the memorial. Such an art work would be easily from passing traffic and pedestrians on Alton Street. Ideas and proposals on possible artworks are particularly encouraged.

The planned works do not include a permanent shelter. Currently the park is not used for picnics or long events. The functions held at the site are mostly very short and associated with functions held at the Cuballing Hall or Cuballing Tavern. A large shelter may also overshadow the War Memorial itself.

The Shire is now seeking your written comments by email or by post or delivered to the Shire Office on the proposed activities by the close of business on Tuesday 4th June 2019.

Office Opening Hours:
Monday—Thursday,
8.30am—4.30pm
Friday,
8.30am—4.00pm

PO Box 13
Cuballing WA 6311
Ph: 08 9883 6031
enquiries@cuballing.wa.gov.au
www.cuballing.wa.gov.au

WASTE OIL RECYCLING

The waste oil collection facility that has previously been located at Yornaning has been relocated to the new, under cover location at the Cuballing Transfer Station.

At the new site, spillages can be contained and contamination from water will be eliminated.

Local residents can unload waste oil during normal transfer operating hours.

Currently the waste oil facility can only accept small drums that can be physically tipped into the collection tank. A new pump is being purchased to empty large drums and pods.



DISABILITY ACTION AND INCLUSION PLAN 2019 — 2024

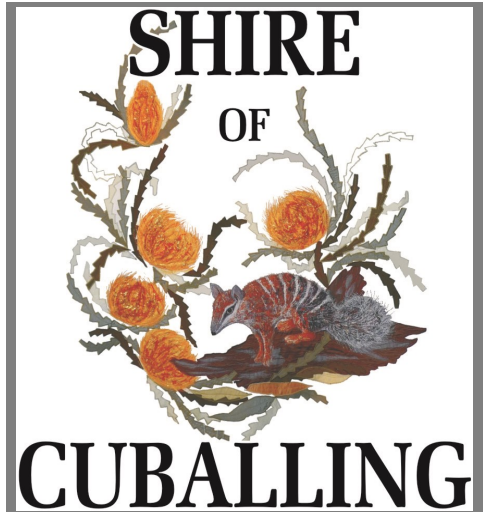
The Shire of Cuballing is seeking feedback on all aspects of their draft Disability Access and Inclusion Plan. To register your comments please forward them in writing to:

The draft Disability Access and Inclusion Plan seeks to describe how the Shire of Cuballing will working to make sure its services are accessible to everyone including people with disabilities.

The draft plan can be viewed on the Shires website www.cuballing.wa.gov.au or copies can be made available on request and in alternative

- Shire of Cuballing, PO Box 13, Cuballing WA 6311; or
- Email enquiries@cuballing.wa.gov.au.

This stage of the community consultation process closes on Wednesday 6th June 2019. After that time all information received will be reviewed prior to formal consideration by Council. For more information contact Gary Sherry at the Shire Office.



COUNCILLOR CONTACTS

- Cr Mark Conley.....0417 503 343
president@cuballing.wa.gov.au
- Cr Eliza Dowling.....0488 775 095
cr.dowling@cuballing.wa.gov.au
- Cr Scott Ballantyne.....0418 814 761
cr.ballantyne@cuballing.wa.gov.au
- Cr Dawson Bradford....0427 877 055
hillcroftbradford@gmail.com
- Cr Tim Haslam.....0429 112 976
haslams1@bordnet.com.au
- Cr Roger Newman..... 0428 836 036
roger@lintonparkfarms.com

UPCOMING COUNCIL MEETINGS

- Wednesday 19th June 2019
- Wednesday 17th July 2019
- Wednesday 21st August 2019

All meetings are open to the public and will commence at 2.00pm with fifteen minute Public Question Time at the commencement of each meeting.

Agenda's for each meeting are included on the Shire website by the weekend prior to each meeting.

Minutes of all Council meetings are available on the Shire website as soon as possible after each meeting.

Office Opening Hours:
Monday—Thursday,
8.30am—4.30pm
Friday,
8.30am—4.00pm

PO Box 13
Cuballing WA 6311
Ph: 08 9883 6031
enquiries@cuballing.wa.gov.au
www.cuballing.wa.gov.au

MAY 2019 COUNCIL MEETING

At the May 2019 Council Meeting, the following was decided:

- Council agreed to support the extension of the Licenced area to the Cuballing Golf Club's Restricted Club Permit.
- Council agreed to continue supporting the Wheatbelt Strategic Freight Route (WSFR) project. The WSFR project is seeking to improve some 4,400km of local government managed roads in the Wheatbelt region comprises that connect with State and National highways to provide access for heavy vehicles. All 42 wheatbelt local governments are supporting this project that has the long term goal of obtaining funding support of approximately \$500 Million for staged capital works over a 10 to 20 year time frame. In April, the Coalition Government announced the first stage of funding of \$70Million.
- Council amended the Shire of Cuballing's Heavy Vehicle Operations policy to support conditional road train access to Spriggs Road. This decision arose because Main Roads WA, who control road train access to all roads, are seeking to add a number of local roads to the road train approved network after local famers sought access to these roads through the Harvest Mass Management Scheme.
- Council will hold a Special Council Meeting to consider the 2019/20 Council Draft Budget at 2pm on Wednesday 26th June 2019
- Council considered Councillor Fees, Allowances and Expenses to be paid in the 2019/20 financial year. The Salary and Allowances Tribunal, who set guidelines for Fees, Allowances and Expenses for all Councillors, in their annual review increased the range of allowances and fees of Councillors by 1% effective from 1st July 2019. Council decided to increase Councillor Meeting fees by an average of 4.8%. This is the first increase of Councillor meeting fees since 2013.

CANCER'S BIGGEST MORNING TEA FUNDRAISER



Thank you While numbers were slightly down on the last 3 to those years we, still managed to raise \$348 for cancer who braved research. If you missed this years's morning tea, the fresh keep a look out this time next year as we will be weather on back.

Thursday
23rd May to

attend the Shire of Cuballing's Cancer's Biggest Morning Tea at the Cuballing Roadhouse. Morning tea consisted of yummy muffins, cakes and fruit slice, washed down with cups of tea, coffee and hot chocolate.



Office Opening Hours:
Monday—Thursday,
8.30am—4.30pm
Friday,
8.30am—4.00pm

PO Box 13
Cuballing WA 6311
Ph: 08 9883 6031
enquiries@cuballing.wa.gov.au
www.cuballing.wa.gov.au

74 AUSTRAL STREET – FUTURE DEVELOPMENT PLAN – COMMUNITY COMMENT

Council is seeking community input on a draft Future Development Plan for the 74 Austral Street property purchased by Council in August 2018. A draft Future Development Plan is available from the Shire of Cuballing's website at www.cuballing.wa.gov.au or from the Shire Office during business hours.

This draft Future Development Plan includes 11 recommendations to develop the 74 Austral Street property, including:

seeking to increase the residential density on the land to allow the creation of ¼ acre residential lots;

- siting independent living aged units on 3 of the 6 lots;
- subdividing land to create 3 or 4 1,000m² residential lots; and
- create one lot for use by the Shire as a works storage area.

This Future Development Plan is the first stage of the Council planning and residents will have the opportunity to review each future stage as each project develops.

Any comment you wish to make on the draft Future Development Plan should be made in writing and lodged with the undersigned on or before Tuesday 2nd July 2019.

For further information or to discuss the draft Local Planning Strategy before making comment, please contact Gary Sherry at the Shire Office.

2019 WASTE MANAGEMENT CHARGES

The Shire of Cuballing will change the way it charges for Waste Management in 2019. Ratepayers will notice changes on their annual rates assessments that reflect these changes.

One change will be an increase in the charge for Kerbside Waste and Recycling Collection from \$250 to \$255 per year. This increased charge will be paid by all residents who receive the service. This is the first increase in the charge since 2016 when the service was introduced. The subsidised cost of the Kerbside Waste and Recycling Collection service for pensioners will be unchanged and remain at \$200 per year.

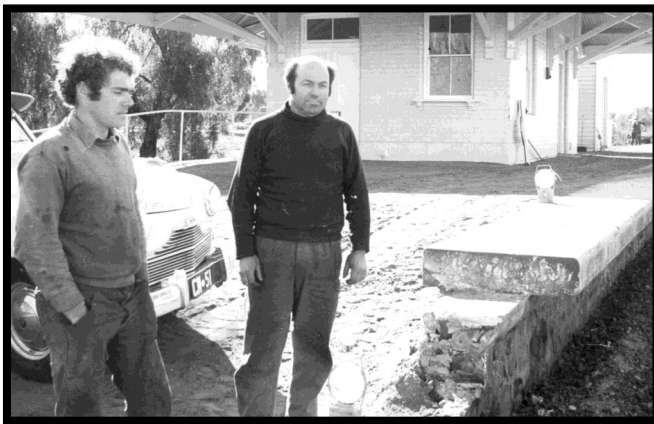
The other change is the introduction of a new \$30 Waste Management charge for all rural properties outside townsite. This fixed charge will be included on each rates assessment. This charge reflects a contribution by these residents/businesses located outside townsites who are able to access Council's waste and recycling services at Waste Transfer Stations at Cuballing and Popanyinning.

Office Opening Hours:
Monday—Thursday,
8.30am—4.30pm
Friday,
8.30am—4.00pm

PO Box 13
Cuballing WA 6311
Ph: 08 9883 6031
enquiries@cuballing.wa.gov.au
www.cuballing.wa.gov.au

OUR HISTORY POPANYINNING RAILWAY BUILDING

Popanyinning Pool, as the station was first named, was described in a gazetteer of 1894 as a siding on the Great Southern Railway 199 miles from Albany. The fare from that coastal town was 33 shillings and two pence. When the siding was planned in the early 1880s it was designed to be large enough so that one train could pull into a side line and allow another to pass. It was also equipped with a station building erected at ground level. However, in April 1913 this was replaced by a set of buildings some 85 metres to the north, built on the longest platform on the railway.



Accommodation for the railway workers began with a tent camp and a few humpies in the railway yard. While the railway was being constructed several small mud-brick houses were erected north of the yard, and these were later used by the fitters who checked and maintained the railway. Barracks were also built in about 1904, and two additional cabins supplied in 1925. At times permanent staff members took up land and erected their own homes. These were still there after World War II for they were used as temporary homes for British immigrants.

One railway house that has not disappeared is the one originally erected for the stationmaster. No officer was appointed to this position before 1910, with the result that guards were throwing out parcels at the siding and these were either broken by the fall or torn apart by wandering stock. Consequently in April 1906 the Popanyinning Progress Association began pressing for an officer to conduct railway business and stationmasters were appointed between 1 July 1910 and 30 July 1916, and from 1 November 1919 to 1 December 1925. From December 1925 the station was downgraded, so that station masters were no longer appointed and a series of caretakers and porters looked after the station.

Two events connected with the Popanyinning station stand out in local memory. One was when the last passenger train ran between Albany and Perth. Although it was 1.00 a.m. when the train reached Popanyinning, twenty stalwarts in fancy costumes marked its last journey, with Don Bird's bagpipes sending it on its way with 'Scotland the Brave' amid hearty cheers from the passengers.

The second event took place in 1975 when town residents were shaken to the core to see a bulldozer beginning to demolish the buildings. This act infuriated local people and in a matter of hours a stand was taken, with tractors and heavy equipment brought in to prevent further destruction. The damage was already done to at least half of the station building, but people-power prevailed. Having saved the historic structure, local people then had a constant battle to maintain it against others intent on vandalism. By the 1990s it had been restored and looked well, though perhaps a little odd, being only half a building. However, it still stands, proof that the residents of Popanyinning care for their heritage.



Landcare matters

Hotham-Williams sub-catchment update



PHCC Working Together
Peel-Harvey Catchment Council

Edition 32
June 2019

NRM is the management of natural resources such as land, water, soils, plants and animals. It brings together land use planning, water management, biodiversity conservation and sustainability of industries such as agriculture, mining, tourism, fisheries and forestry.

Tunbridge Gully Update



Spraying of *Juncus acutus* (Spiny Rush) has been completed for the 3rd year in Tunbridge Gully. It has been encouraging to see the extent of the weed greatly reduced since the Tunbridge Gully Restoration project commenced in 2016 thanks to funding through South32 Worsley Alumina.

The burn off which took place last autumn to reduce the dead biomass and seed head has exposed regrowth of the weed making it easier for young plants to be targeted with herbicide. Planning for a second controlled burn is underway with the local volunteer fire brigades and will hopefully occur in the coming weeks.

Local Shire Visits



Mel has been out in May talking to the Shires of Williams and Cuballing about the work we've been doing in their local communities. Mel spoke about our now secured 5 years of funding from the Australian Governmental National Landcare Program and Newmont Boddington Gold and how this will benefit the community.

PHCC is working with the Boddington, Wandering, Cuballing and Williams Shires through the formalised Hotham-Williams Shires Memorandum of Understanding.

Wandoo Crown Decline and Lerp

You may have observed a decline in the crown health of wandoo trees recently. This is largely due to a reduction in rainfall and increasing temperatures causing the trees to become stressed and vulnerable to insect infestations and associated pathogenic fungi. Single paddock trees and road side trees are more likely to suffer from crown decline, possibly due to the fact there are less of the insects' natural predators.

The beetle, known as *Cissels fascigera*, can cause decline in wandoo crowns. The adult beetles lay their eggs on the bark of twigs in summer, the eggs hatch and the larvae bore a tunnel down the twig and branch, which results in branch death, particularly in autumn.

Lerp (psyllid) can affect stressed wandoo trees, they are sap sucking insects which attack leaves causing discolouration and defoliation. *Eucalyptus rudis* known locally as flooded gum, are also commonly affected by lerp especially in creek lines and river systems. Most trees can cope with high lerp numbers for a couple of

seasons, climate is one of the main factors that influence the growth and decline of lerp populations.

Wandoo crown decline is more prevalent in dry autumns and most trees are able to recover from the associated insect infestations. An unintentional cause of tree decline can sometimes be caused by spray drift from herbicide applications.

If you would like more information see the links below or call us on 0455166780.

<https://library.dbca.wa.gov.au/static/FullTextFiles/922431.pdf>

<https://www.agric.wa.gov.au/pest-insects/native-plant-pests?page=0%2C1>

https://www.agric.wa.gov.au/sites/all/modules/custom/seed_tools/pestweb/907120914.html

<https://cms.canning.wa.gov.au/Latest-News/2017/10/24/03/53/Psyllids-attacking-Swamp-Gums>

Thanks to Peter White from DBCA for this information.

Coming Up...

MAY Dryandra Woodland Phascogale Nest Box Installation with the Wandering Primary School students

MAY/ JUNE Completion visits for the 2018/2019 landholder grants

JUNE 6 Peel Bright Minds Pop up Science Café in Boddington

SEP/ OCT River Action Plan field work and health assessments for the Hotham and Williams Rivers

Watch this space for the 2019/2020 potential grant opportunities

Do you have an NRM event you would like us to promote? Please contact Mel Durack at melanie.durack@peel-harvey.org.au or 0455 166 780

GOLF NOTES

Welcome back Sports Fans

Oh Yeah its on again. Smacking that white ball across the Great Southern.

Lots have happened since the Machinery Shed burnt down last year and the Club lost the shed and everything in it. The rebuild was on and the insurance has helped get the shed back up but did not cover any equipment that was stored in the shed. The hunt for new gear to mow the course was on and unfortunately funds were very low, money doesn't go far when your looking at tractor and mowers.

The Golf Club should host a fundraising event and one that will give everyone a night to remember. We put our thinking caps on and approached a band that has become quite famous as of late. 'Drinks and Tips ". These guys were hard to hunt down and possibly unavailable due to the fact they were touring somewhere in America. (I know what you are thinking as if they will even know where Cuballing Golf Club is). We'll just ask and you never know, and hey presto ,straight off the plane and before we new it they smashed out a great night of entertainment and a good catch up with locals from Cuballing and Narrogin area. Approximately 90 people packed into our little club house with singing and laughter. The night was a huge success and from the word on the street, everyone had a fantastic time.

The Golf Club fundraiser received over whelming support and we thank everyone that took the time out to support our club.

A big thanks to Barry Mc Nab from Narrogin Earthmoving & Concrete for the concreting work and a cash donation, thank you also to Narrogin restoration Group for their contribution and the Shire of Cuballing for getting the shed erected before golf season started. Its been a huge effort from lots of people and volunteers. I'm happy to report that a recent trip to Perth landed the Golf Club a nice little score. We were blessed this day when we found this ex Shire Tractor with low hrs on it and at a price we could not refuse. All our waiting for the right moment and help from the wonderful community has made this purchase possible.



GOLF NOTES

If you are wondering about the mower ? again we were in luck . When Wilsons Machinery came down to the golf club to remove the charred remains of the mower and tractors they kindly refurbished our crispy parkland mower for half the price of a new one. Happy days as we are now back on track.

The club at this stage is golfing all the way and with some new faces and members and is business as usual. The new members have played 3 rounds of stroke straight up, which gives them a average for a golf handicap and a golf link number. Well done to those new guys. Golf itself has been up and down for some and for others win, win, win. The main thing is Cuby Golf Club is back on track and Saturdays is still the playing day.



Thanks again to all the people that have supported The Club in our time of need.

Stay Tuned for the next instalment of Golf notes. Morty

POPANYINNING FIRE BRIGADE'S LONG SERVICE AWARD

At the February meeting of the Popanyinning Town Fire Brigade a presentation was made to honor the long service record of Jo Sankey.

Jo has been the secretary and radio caller for the town brigade since 2008 and has performed her duties with distinction. Jo is highly regarded by members of the Popo brigade and residents within the district, for her dedication to the task and her efficiency in getting the job done.

Jo was presented with her certificate of merit by the Popanyinning town Volunteer Fire Brigade member, Fred Chapman. Jo was very surprised by her certificate and the gift vouchers. Been a community volunteer Jo did not expects to be rewarded or recognised for her long term efforts. Jo will be a sad loss to the brigade, but all of her fellow brigade members wish her well in her future endeavors. Well done Jo.



CUBY MEN'S & WOMEN'S SHED MATTERS

John Buise and I attended the Every club, Not For Profit Governance 101 workshop organised by the Cuballing Shire and came away with useful information on running our Shed.

Representatives of the Cuballing Men's and Women's Shed met with the Cuballing Golf Club committee and came to an understanding of the scope of The Cuby Festival which will be held in September 2020 and the role the parties would have in it. Lindsay George offered his son Cooper to set up a website and Facebook account for the Shed so we could manage the publicity and related activities of The Cuby Festival 2020.

In the case of one of our members collapses and starts thrashing on the floor and gurgling incomprehensible cries, the Cuby Men's Shed are now prepared as three Men's Shed Volunteers (Lock Burges, John Buise and Carry Van Empel) attended a first aid course hosted by St John Ambulance. All 3 members passed and are now officially sanctioned to administer band aids and preform CPR. As a further reassurance our defibrillator will arrive in a fortnight; can't wait to zap someone.

All members have been notified of the AGM which takes place on the 2nd of July 2019; as usual, the office bearer's positions will be declared vacant and don't forget that the membership fee will also be due.

Thank you to Lock Burges and Les Doak who volunteered to slap a good dose of oil on the plough man and his dog; they are shining again to doing Cuby proud.

We are $\frac{3}{4}$ through doing up the tables and benches of the Dryandra Village; it has been a combined effort of both the Men's and Women's Sheds and they are looking schmicko. Apart from working on those tables and benches, the ladies have been thoroughly enjoying themselves restoring furniture, mastering fillet welds, been shown how to cave a wooden spoon, making a tool rack and of course smoko – there's much to laugh about Michael Traill from the Narrogin observer dropped in during the Women's Shed and will publish an article shortly. The rumour mill told us there were community grants available at the Commonwealth bank – sadly, they had all been allocated already so we will try again for the next round.

On Saturday morning, the 15th of June we will have a firewood raffle at Coles as a fundraiser for our Cuby Shed, see you there.

Carry Van Empel
Secretary
Cuballing Men's Shed Inc.
97 Alton Street
PO Box 33
Cuballing WA 6311
Mob 0481 369 156
cubyshed@mensshedswa.org.au



COMMUNITY NOTICES

Access via Corrie Street JARRAH FIRE WOOD \$165.00 a cubic meter

Sand, Gravel, Blue metal fines,
Concrete mix, Vegie mix, Gar-
den mix, Bushland mulch, Bags
of Kindling.

Please ring Brian on

0412 722 219

to arrange for delivery or pickup

EFTPOS Available

General garden duties

Removal of garden waste & rubbish

Fence repairs

General maintenance & handyman work

Bobcat small and medium jobs

Drive way repairs

Deceased estate cleaning and removal

HOTZ PLUMBING & GAS

Richard: 0407196 663




Your friendly service.
On time. Honest. Neat & tidy.
hotzplumbing@outlook.com
GF: 6220; PL 5344; BF: 3017

'YOUR NEW PLUMBER'
fully licenced gas fitter and
plumber.



Hot water servicing. Burst pipes. Leaking taps. Bathroom renovations
Storm water. Gutter replacements. Gas servicing. All general plumbing.



NgN-Cuby Stock Feed

ALL YOUR PET AND LIVESTOCK NEEDS

HORSE – Feed - Nutrition – Medical - Accessories
POULTRY – Mixes - Crumbles
DOG – Kibbles – Rolls – Tins - Accessories
CAT - Biscuits
BIRD – Seed Mixes, Aviary, Parrot
SHEEP – Cubes
HAY BALES & ROLLS

DELIVERIES AVAILABLE WEEKLY

SPECIALIST FEEDS AVAILABLE ON ORDER FOR ANY ANIMAL

24 Fairway Street, Narrogin www.narrogingasworx.com.au Ph: 9881 2005

Narrogin
GasworX

MELCHIORRE PLUMBING & GAS

Brad Melchiorre

melchiorre.plumbing@hotmail.com

0424 657 097

FOR ALL YOUR PLUMBING NEEDS!

Commercial | Residential | Maintenance
Renovations | Hot Water Systems

Servicing Cuballing and surrounding towns.

PL8495
GF015227

Popanyinning Progress Association

New members welcome!

Next Meeting 26th June 6.30pm

Popo Hall

Place your business ad here.

Prices start at \$8.00 a month

For details

contact 98836 031 or

cdo@cuballing.wa.gov.au

COMMUNITY NOTICES



119 FEDERAL STREET, NARROGIN
9843 2186

NEED AN ULTRASOUND??



Come and see our friendly, expert team at NARROGIN ULTRASOUND

We perform all types of Ultrasound Examinations including:

General, Vascular, Musculoskeletal, Small Parts, Paediatrics and Obstetrics. Obstetric Ultrasound includes 3D/4D images.

NO WAITING LIST!

BULK BILLING AVAILABLE FOR CONCESSION CARD HOLDERS AND CHILDREN UNDER 16

www.narroginultrasound.com.au info@narroginultrasound.com.au

Cuballing Volunteer Action Group

Next Meeting

June 12th 6.30pm Cuballing Rec Centre

All welcome!

Peter Rundle MLA

 Member for Roe

Narrogin Office
PO Box 378, Narrogin WA 6312
Ph 08 9881 1225
Fax 08 9881 3082

Esperance Office
107 Dempster St, Esperance WA 6450
Ph 08 9071 6555
Fax 08 9071 6788

Peter.Rundle@mp.wa.gov.au
www.peterundle.com.au
@PeterRundleMLA
facebook.com/PeterRundleRoe



THE NATIONALS
for Regional WA

COMMUNITY CALENDAR — June 2019

Mon 3rd	June	Line Dancing 6pm @ Cuballing Agricultural Hall
Tue 4th	June	Craft Day @ Cuballing CWA Hall
Tue 4th	June	Men's Shed Meet @ Cuby Men's Shed 9am
Thurs 6th	June	Women's Shed 1pm –4 pm @ Men's Shed
Mon 10th	June	Line Dancing 6pm @ Cuballing Agricultural Hall
Tues 11th	June	Men's Shed Meet @ Cuby Men's Shed 9am
Tues 11th	June	Craft Day @ Cuballing CWA Hall
Wed 12th	June	Cuballing Volunteer Action Group meet 6.30pm @ Cuby Rec Centre
Thurs 13th	June	Women's Shed 1pm –4 pm @ Men's Shed
Mon 17th	June	Line Dancing 6pm @ Cuballing Ag Hall
Tues 18th	June	Men's Shed Meet @ Cuby Men's Shed 9am
Tues 18th	June	Craft Day @ Cuballing CWA Hall
Wed 20th	June	Shire of Cuballing Council Meeting—Council Chambers
Thurs 21st	June	Women's Shed 1pm –4 pm @ Men's Shed
Mon 24th	June	Line Dancing 6pm @ Cuballing Agricultural Hall
Tues 25th	June	Men's Shed Meet @ Cuby Men's Shed 9am
Tues 25th	June	Craft Day @ Cuballing CWA Hall
Wed 26th	June	Popanyinning Progress Association meeting 6.30pm @ Popanyinning Hall

To add an event to the Community Calendar, email your event details to
enquiries@cuballing.wa.gov.au